



**ALASKA DIVISION OF HOMELAND SECURITY &  
EMERGENCY MANAGEMENT**

**SITUATION REPORT 23-095 • APRIL 05, 2023**



Toll-Free 1.800.478.2337

Anchorage Area 907.428.7000

SEOC 907.428.7100

<p><b><u>SEOC Preparedness Level</u></b> Level 1 – Routine Operations</p>	<p><a href="http://ready.alaska.gov">http://ready.alaska.gov</a></p>	<p><b><u>National Terrorism Advisory System:</u></b> <a href="#">Read the NTAS Bulletin here</a></p>
<p><b><u>Maritime Security (MARSEC)</u></b> Level:1-Minimum Appropriate Security Measures</p>	<p><b>WHO Novel Coronavirus Pandemic (COVID-19):</b> <a href="#">2019 Novel Coronavirus</a></p>	<p><b><u>Alaska Military Installation Force Protection Level:</u></b> FPCON Bravo</p>

(Significant changes from previous situation reports are red.)

**Significant Issues:**

None

**State of Alaska Department of Health (DOH)**

The DOH is leading the State of Alaska COVID-19 Recovery, supported by the SEOC and other state departments as required.

For current COVID-19 information, see:

<https://covid19.alaska.gov/>

<https://www.cdc.gov/coronavirus/2019-ncov/index.html>

**NTAS Bulletin**

The U.S. Department of Homeland Security has issued an updated National Terrorism Advisory Bulletin. The updated bulletin can be viewed at the below link.

To read current or expired advisories, click the link below:

<https://www.dhs.gov/national-terrorism-advisory-system>

**Travel Alerts and Conditions**

For current driving conditions dial 511 or link to <https://511.alaska.gov/>

**Barry Arm Landslide / Tsunami Risk**

For the latest information on the Barry Arm Landslide and Tsunami risk, click here:

[DGGs Barry Arm Landslide and Tsunami Hazard](#)

**Recent Earthquakes**

USGS Earthquake Information: <http://earthquake.usgs.gov/>

National Tsunami Warning Center: <http://tsunami.gov/>

## Alaska Volcanoes

**Great Sitkin** Alert Level: **Watch** and Aviation Color Code: **Orange**  
**Aniakchak** Alert Level: **Advisory** and Aviation Color Code: **Yellow**  
**Semisopchnoi** Alert Level: **Watch** and Aviation Color Code: **Orange**  
**Takawangah** Alert Level: **Advisory** and Aviation Color Code: **Yellow**  
**Tanaga** Alert Level: **Advisory** and Aviation Color Code: **Yellow**  
**Trident** Alert Level: **Advisory** and Aviation Color Code: **Yellow**  
For Alaska Volcano updates, go to: <https://www.avo.alaska.edu/>

## Air Quality Index (AQI) Advisories

For the most up to date Air Quality Index Advisories:

<http://dec.alaska.gov/Applications/Air/airtoolsweb/Home/Index>

## Spills of Oil and Hazardous Substances

The ADEC Spill Prevention and Response page is located at:

<http://dec.alaska.gov/spar/ppr/spill-information/response/>

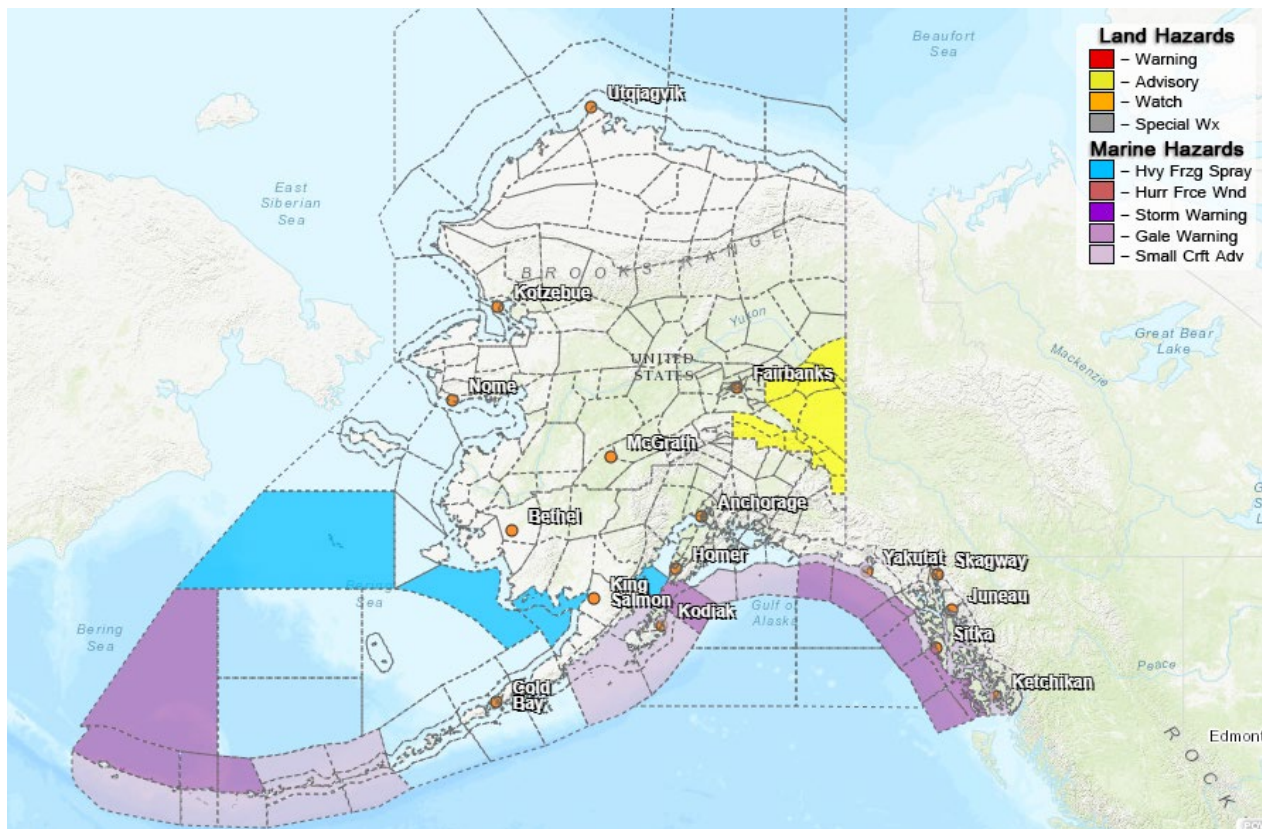
## Alaska Cyber Security Information

State Employees may sign up for cyber security notifications and alerts at

<https://oit.alaska.gov/security>

CISA-Cybersecurity Services and Tools: [www.cisa.gov/free-cybersecurity-services-and-tools](http://www.cisa.gov/free-cybersecurity-services-and-tools)

## Significant Weather:



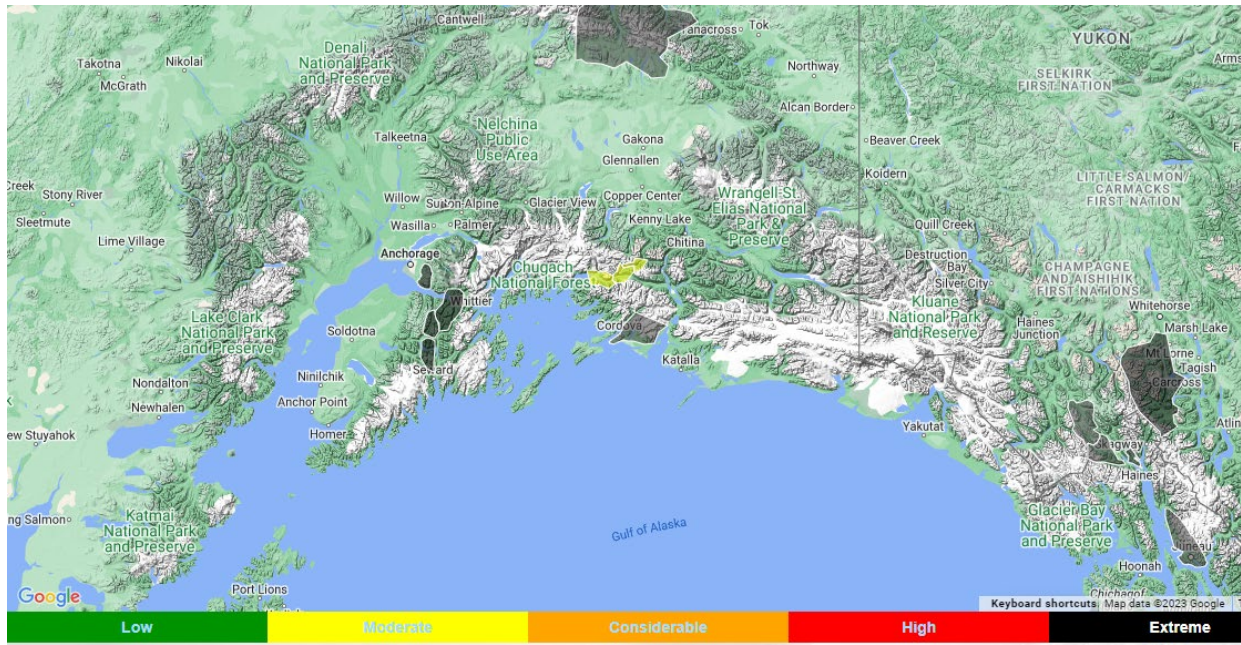
The following Winter Weather Advisories are in effect:

- Eastern Alaska Range – Snow expected with accumulation of 4 to 10 inches mainly south of Black Rapids from noon today through 7:00AM Friday.

- Upper Tanana Valley and the Fortymile Country – Snow expected with accumulation of 3 to 6 inches from 6:00PM this evening through 10:00PM Thursday.

For more information and the most current weather, go to: <http://www.weather.gov/arh>.

### **Avalanche Forecast:**



- Haines – Moderate advisory level above 1,500ft and low advisory level below 1,500ft.
- Valdez – Considerable avalanche advisory level 1,500 ft and above and moderate below 1,500 ft.
- Cordova area: Considerable advisory level above 2,000 ft, Moderate advisory level from 1,00ft to 2,000ft and low advisory level below 1,000 ft.
- Turnagain Pass – Considerable avalanche advisory above 1,000 ft., Moderate avalanche advisory level below 1,000 ft.
- Hatcher Pass – Moderate advisory level above 2,500 ft. for Wind Slab on Southwest to Northwest aspects on slopes 35° and steeper. Low advisory level below 2,500 ft.

Check the Avalanche Forecast Center closest to your area for the most up to date information on avalanche potential. <https://alaskasnow.org> or <https://www.weather.gov/afc/avalancheweather>

**The Next Situation Report:** will be **06 April 2023**. A significant change in the situation or the threat level will prompt an interim report. This report is posted on the internet at <https://ready.alaska.gov/sitrep>.

To register for email distribution, go to <http://list.state.ak.us/mailman/listinfo/dhsem.situation.report>. Direct questions regarding this report to the SEOC at 907-428-7100 or [seoc@alaska.gov](mailto:seoc@alaska.gov)